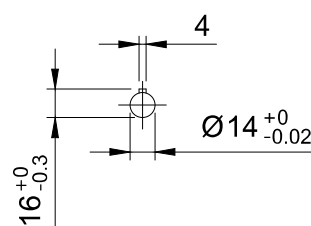
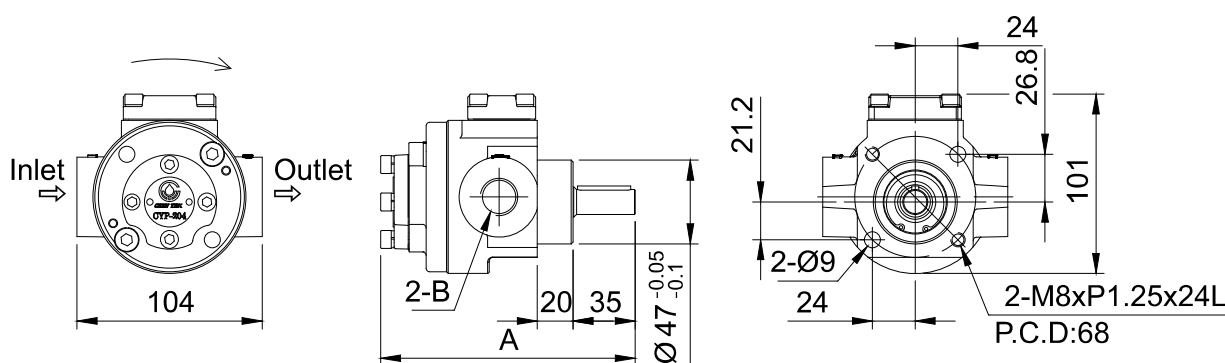




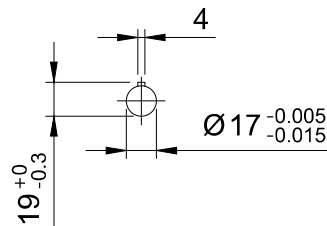
CYP-204 Heavy Oil Pump



CYP-204-HA Heavy Oil Pump
with Adjustable Pressure Valve



Shaft Size of CYP-204, 206, 208, 210, 212



Shaft Size of CYP-216, 220

◆ Features

1. The discharge volume and the maximum pressure are much higher than the rotary oil pump.
2. Recommend adding a CYP-HA adjustable pressure valve to a heavy oil pump. The suitable range of pressure adjustment is 0 to 10kgf/cm². The proper operating pressure of the heavy oil pump should be under 10kgf/cm² to prevent damage due to high pressure.
3. Recommend working with a 1/2HP and above motor for lubricating and cooling purposes. It can be applied widely to various industrial machines, such as machine tools, screw machines, special-purpose machines, gearboxes, and medium to large machines.
4. If you need the heavy oil pump to be assembled with a PMO-0 motor, please refer to P.104 and provide us with the order code.

◆ Dimensional Data & Technical Data

Model	Discharge Volume (L/min)		A (mm)	B Bore	Applicable Rotational Speed (min ⁻¹)	Max. Pressure (kgf/cm ²)	Suitable Viscosity	N.W. (kg)	Suitable PMO-0 Motors (Minimum Horsepower)	
	1420min ⁻¹	1720min ⁻¹							W/CYP-HA	W/O CYP-HA
CYP-204	7.5	9.0	143	PT1/2	450 – 2000	20	32-220 cSt@40°C	3.2	1/2 HP	1 HP
CYP-206	11.3	13.5	148	PT3/4				3.3	1/2 HP	1 HP
CYP-208	15.3	18.5	153	PT3/4				3.5	1/2 HP	1 HP
CYP-210	19.0	23.0	158	PT3/4				3.7	1/2 HP	2 HP
CYP-212-1	21.9	26.5	163	PT3/4				3.9	1 HP	2 HP
CYP-212-2	21.9	26.5	163	PT1				3.9	1 HP	2 HP
CYP-216	29.3	35.5	173	PT1				4.3	1 HP	2 HP
CYP-220	34.3	41.5	183	PT1				4.6	2 HP	--

※ If you need to add an adjustable pressure valve to a heavy oil pump, please add HA after the model number when you place an order. For example, CYP-216-HA stands for one set of CYP-216 assembled with CYP-HA.

※ After adding the adjustable pressure valve, the net weight increases by 322g.

※ Heavy oil pump can add a holder on request. The fixed hole distance is 84x38mm, and the height is 134mm.